

Resultaten snelheidsmetingen Albert Cuypsingel

0-meting (voor aanleg drempels):
8 september 2018 – 14 september 2018

1-meting (na aanleg drempels)
2 oktober 2018 – 8 oktober 2018

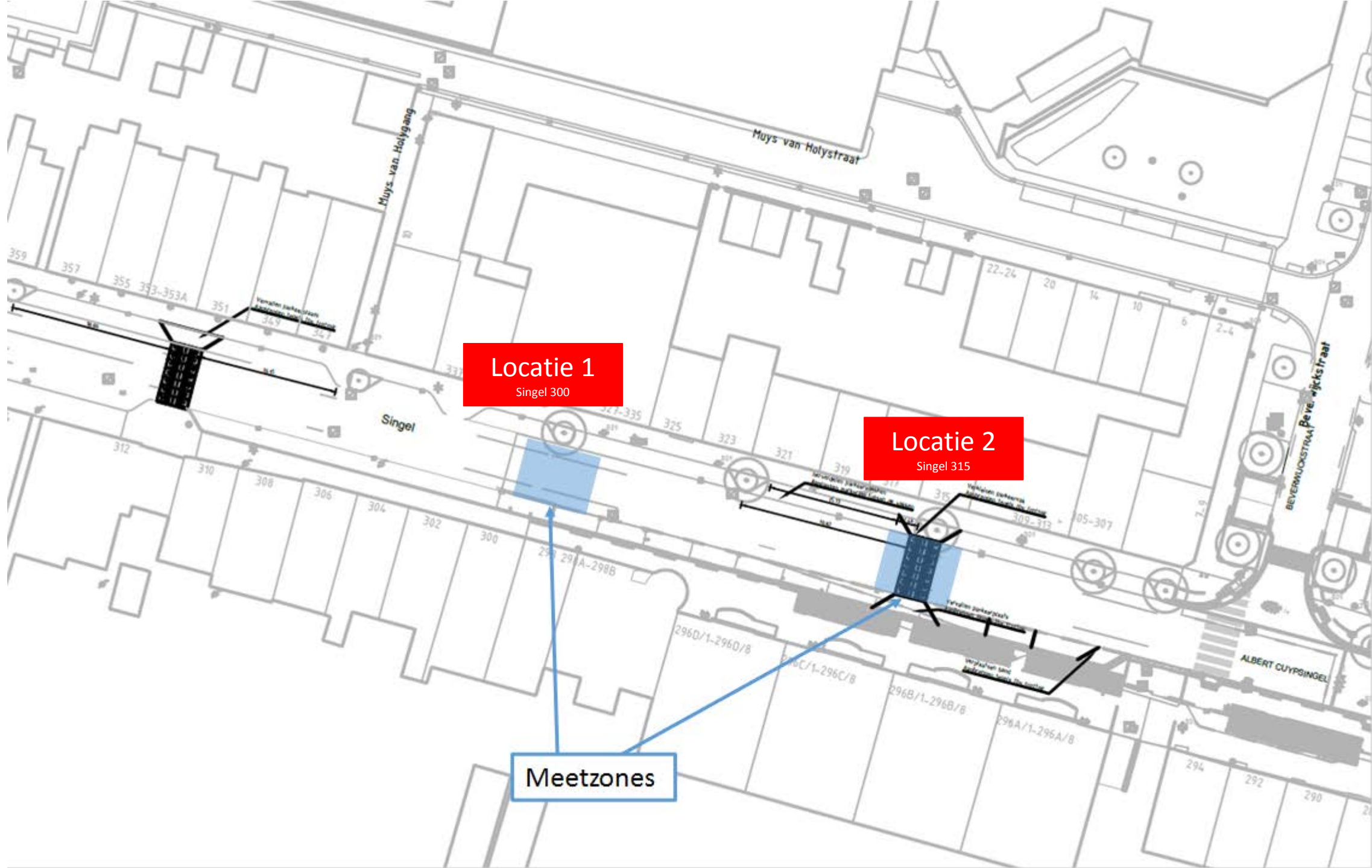
Locatie 1

Locatie 2

Singel 312 / 351-353

Singel 300 / 327- 335

Singel 296 / 315



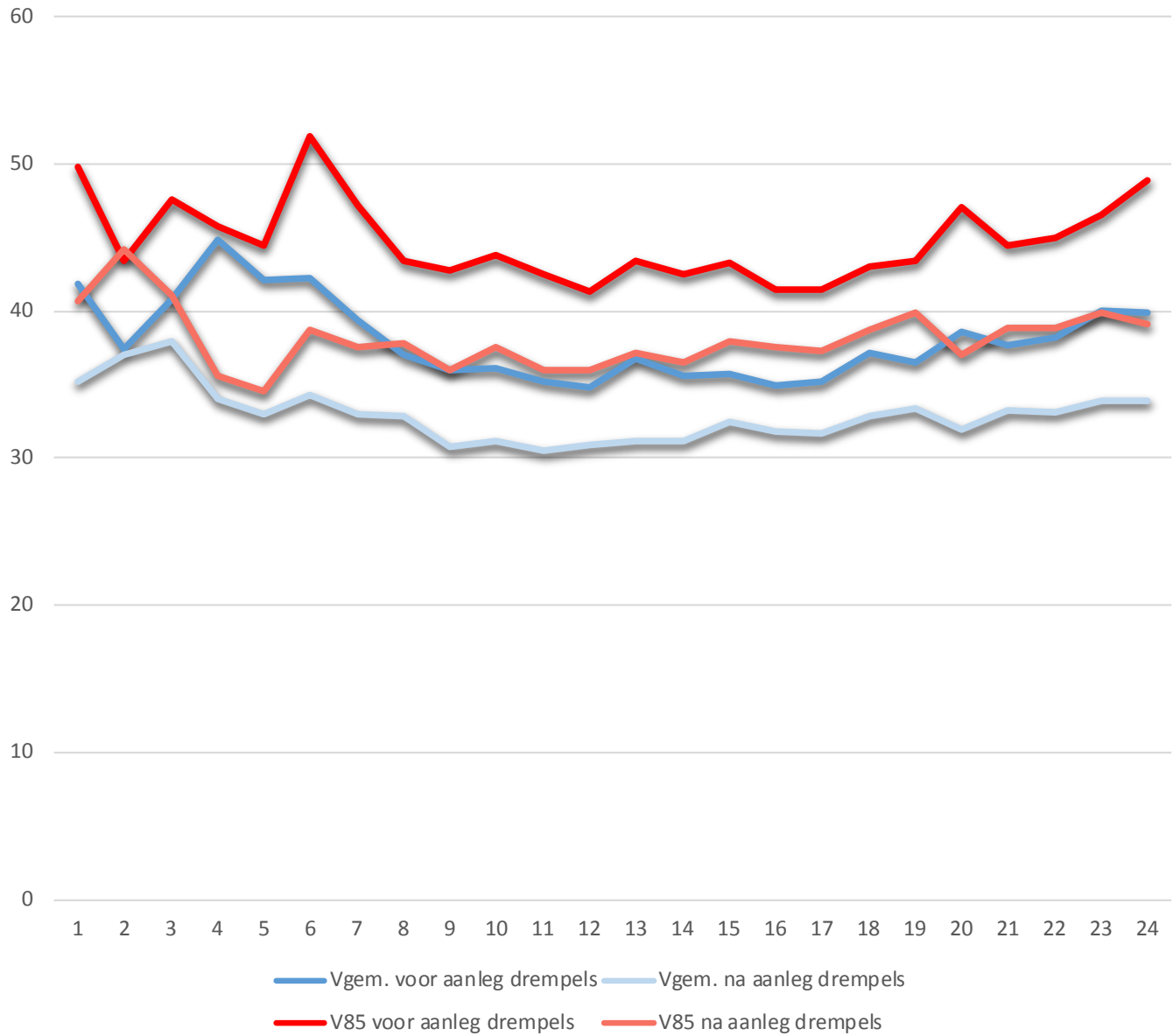
Locatie 1
Singel 300

Locatie 2
Singel 315

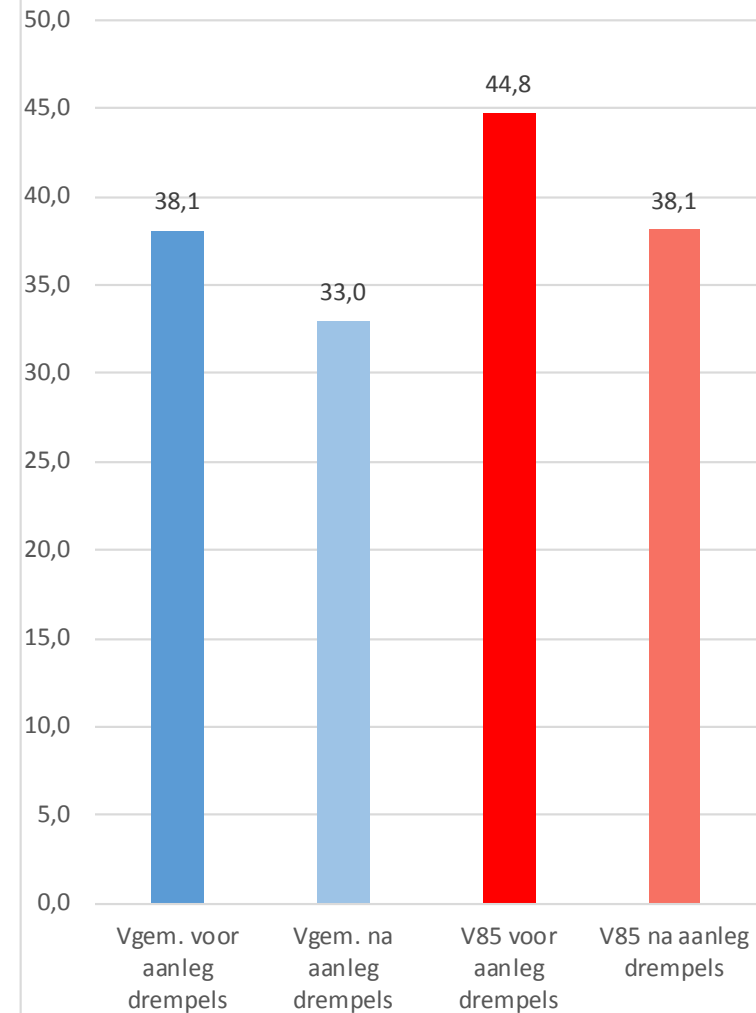
Meetzones

Locatie 1

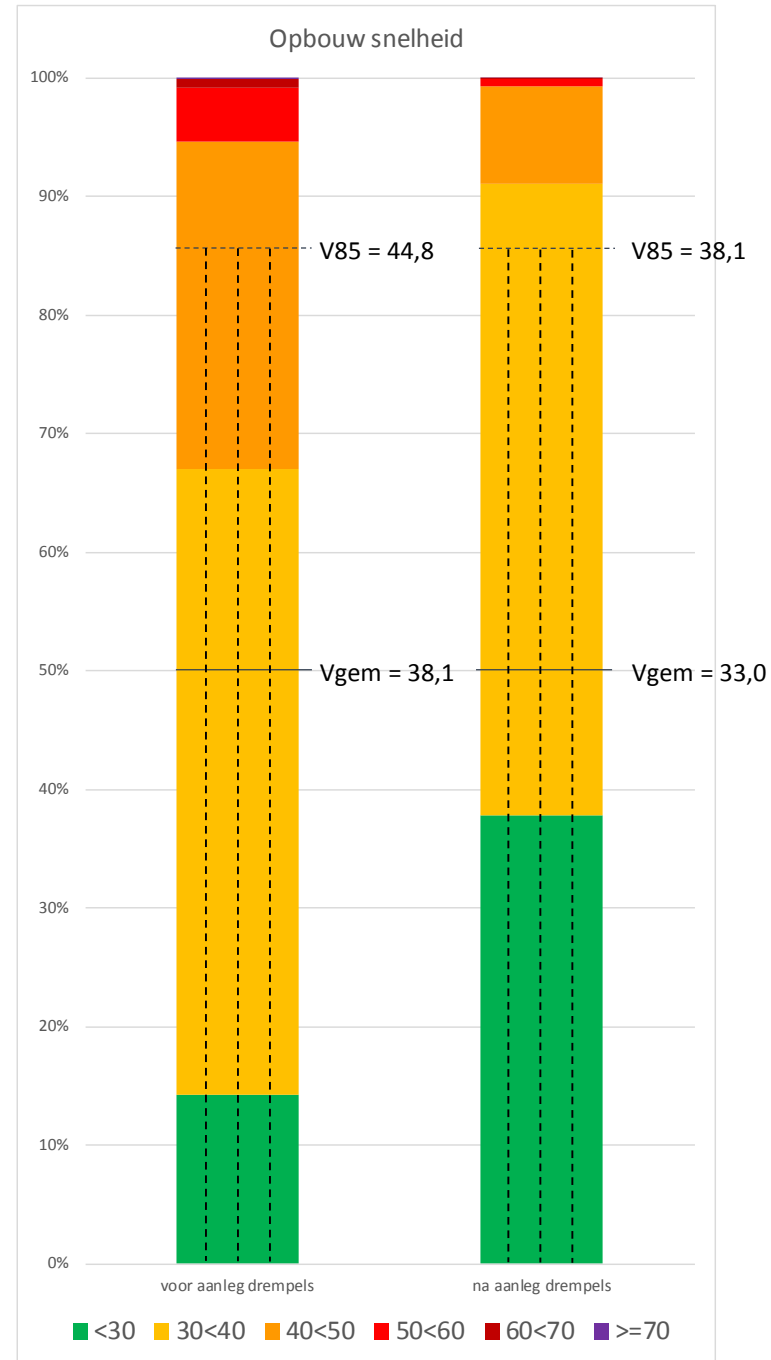
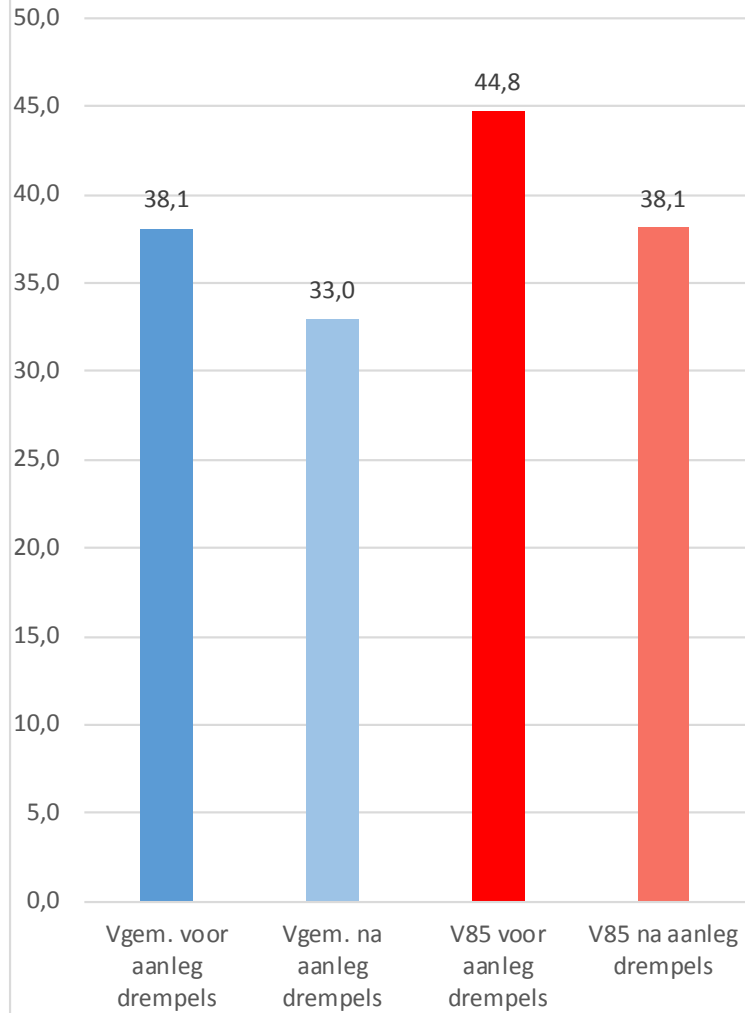
**Dagverloop verschillen Vgem. en V85 thv Singel 300
(tussen drempels)**



**Verskil Vgem. en V85
thv Singel 300
(tussen drempels)**

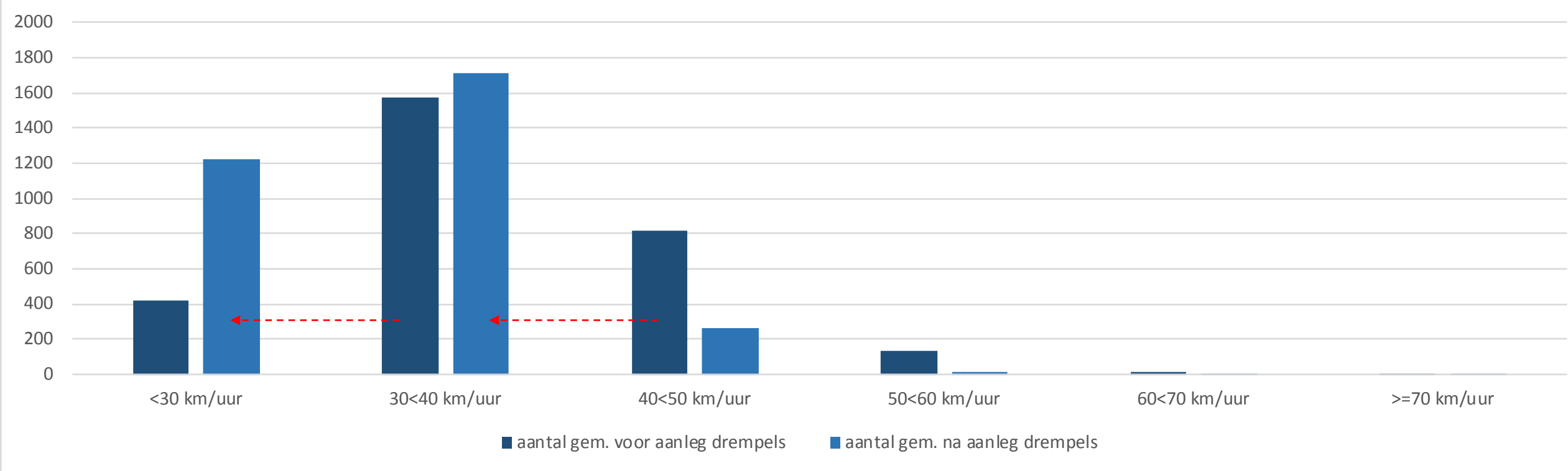


Vershil Vgem. en V85 thv Singel 300 (tussen drempels)



Locatie 1

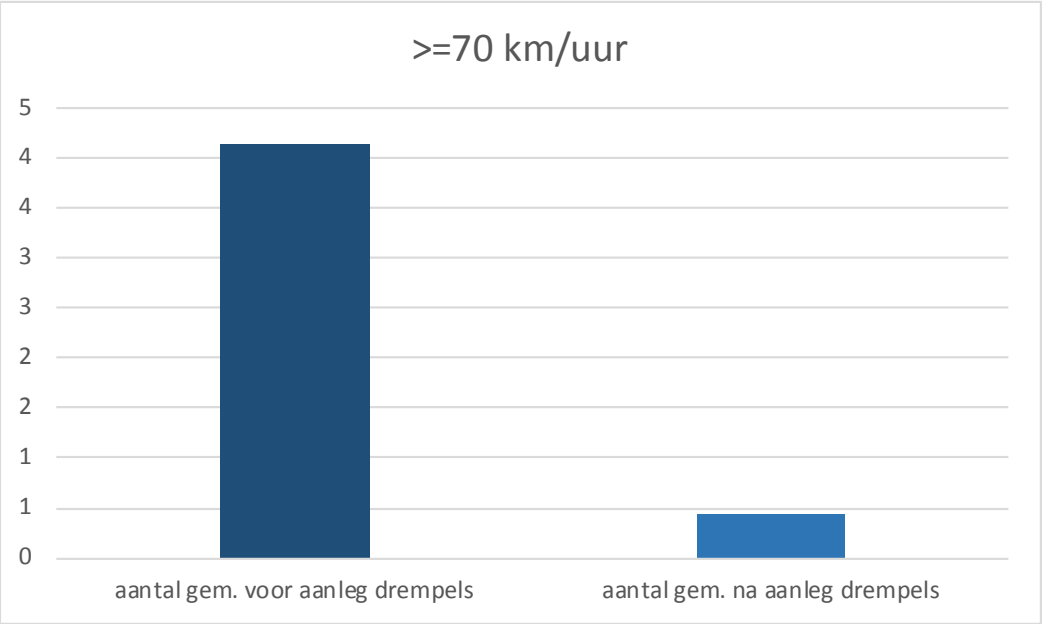
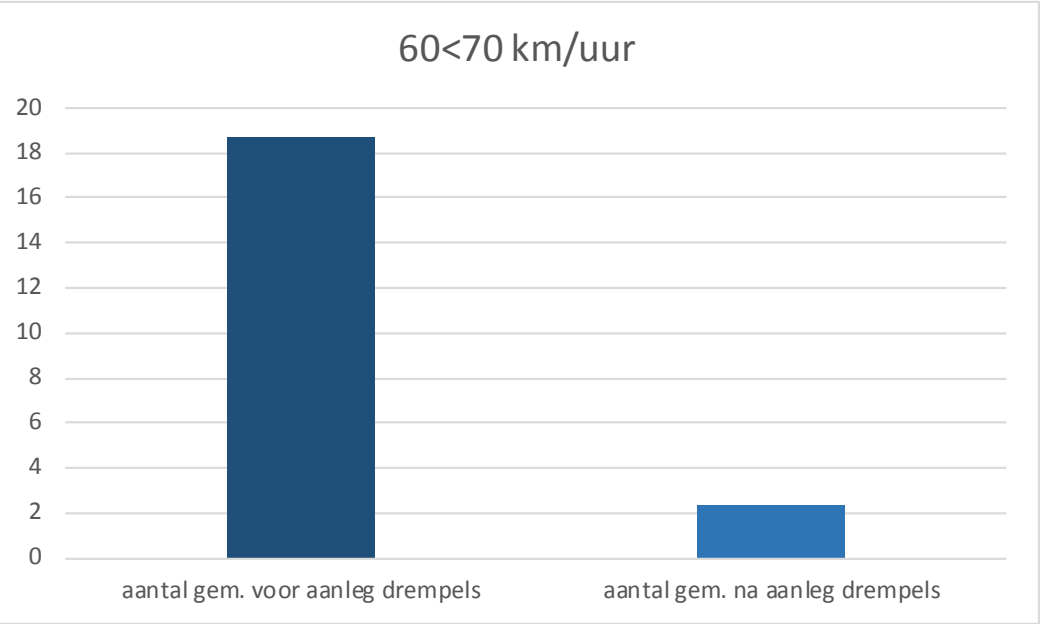
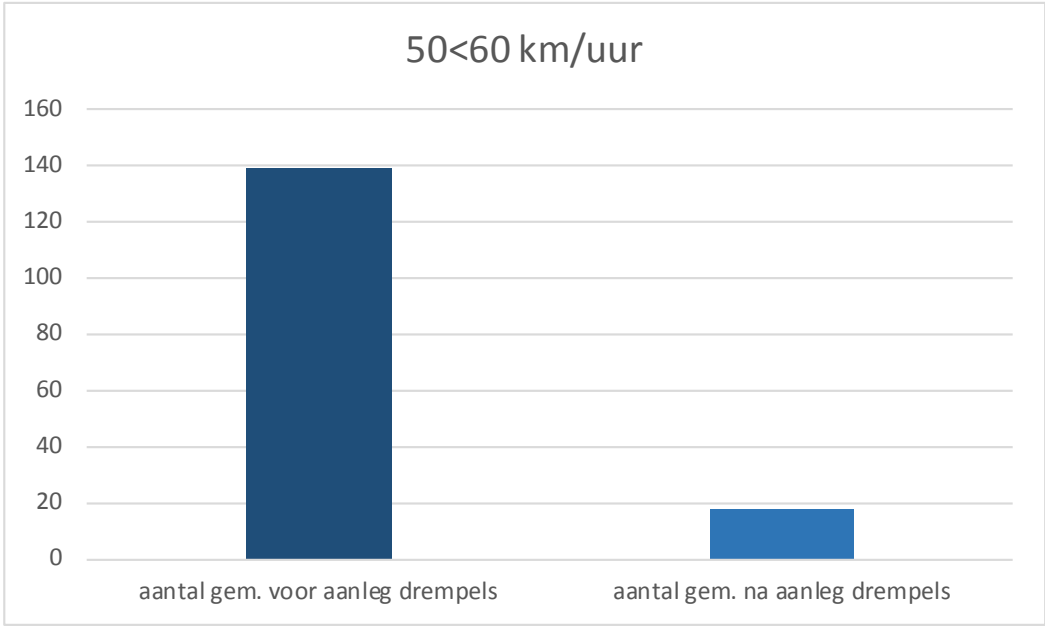
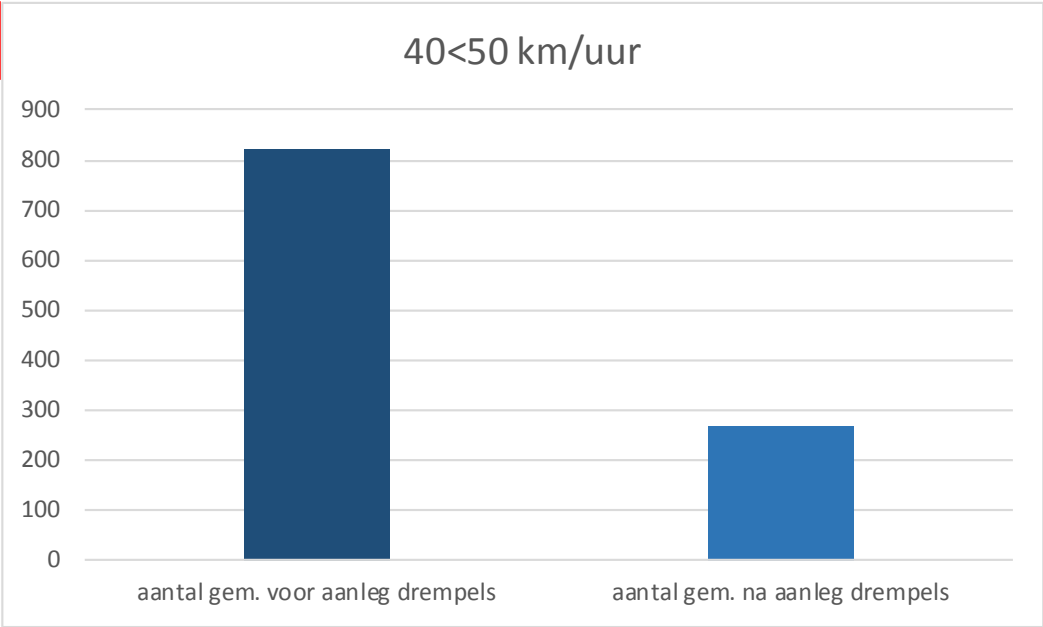
Aantal voertuigen per snelheidscategorie



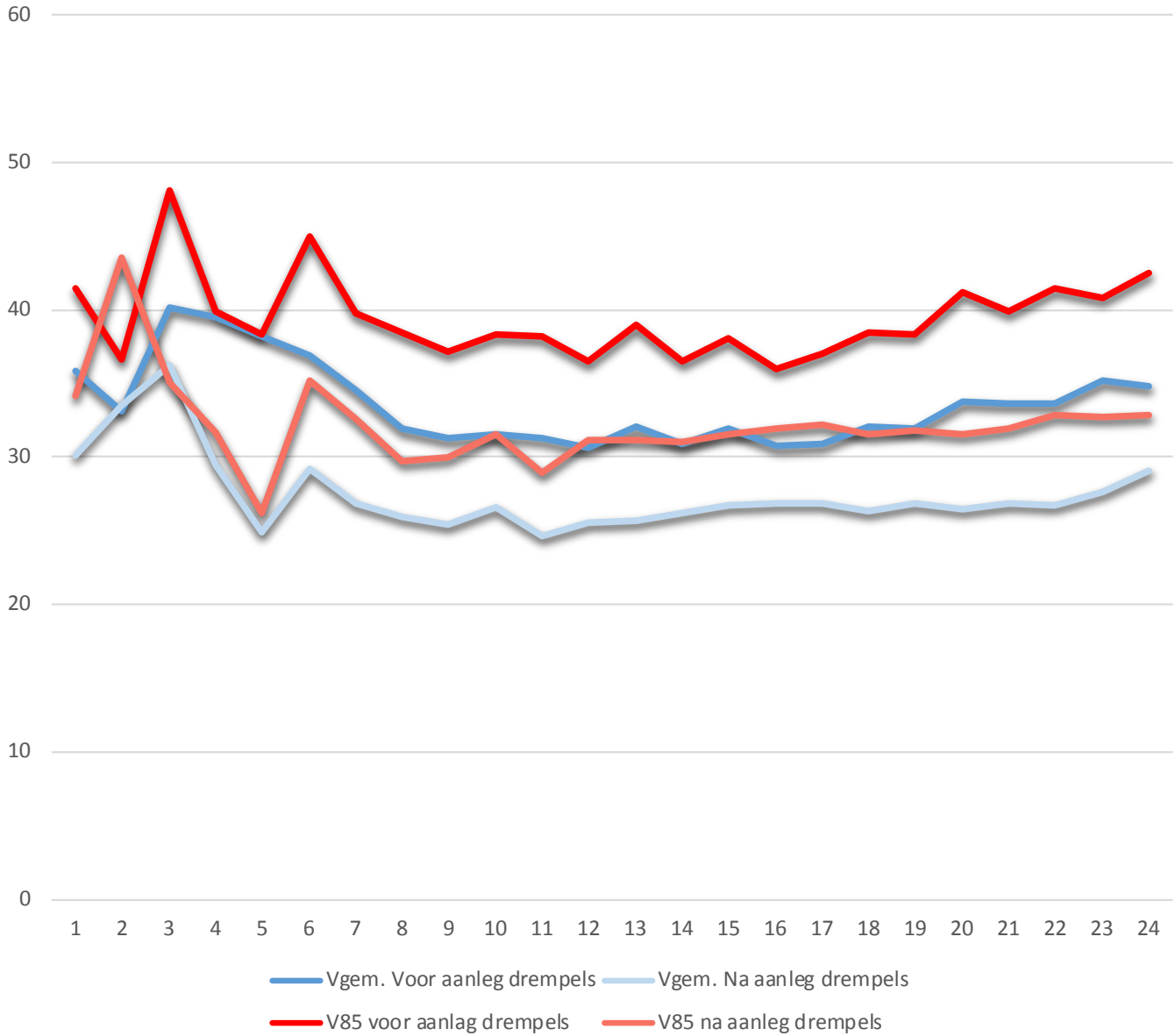
Gemiddeld aantal voertuigen weekdag: 2981

Gemiddeld aantal voertuigen weekdag: 3223

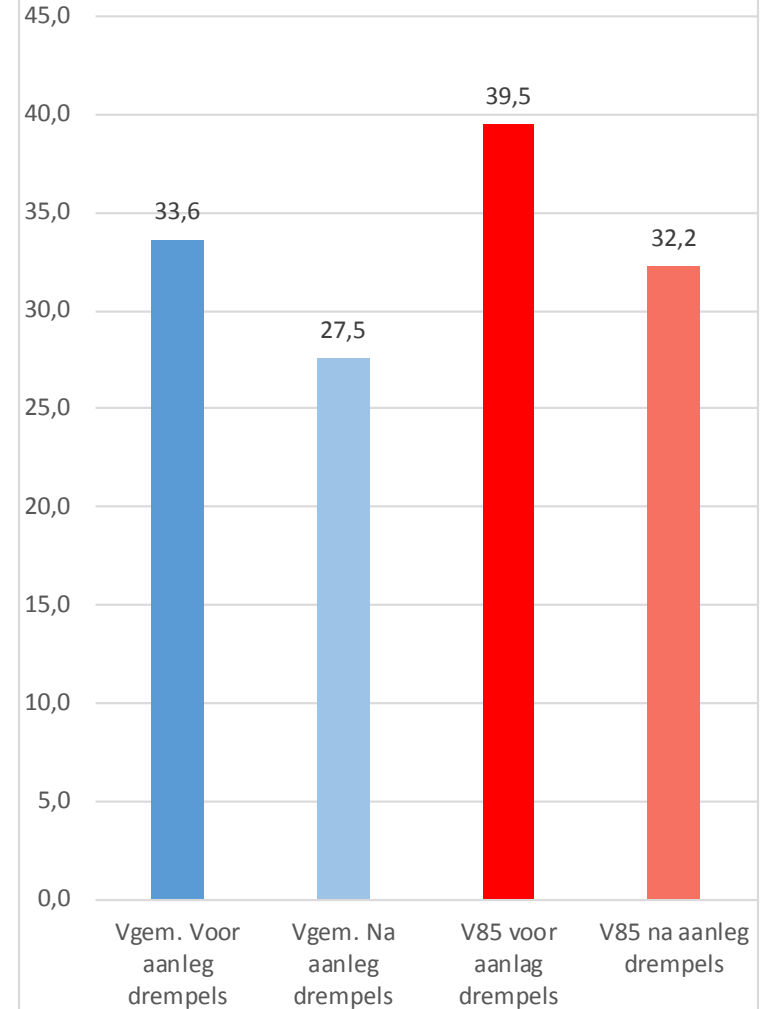
Locatie 1



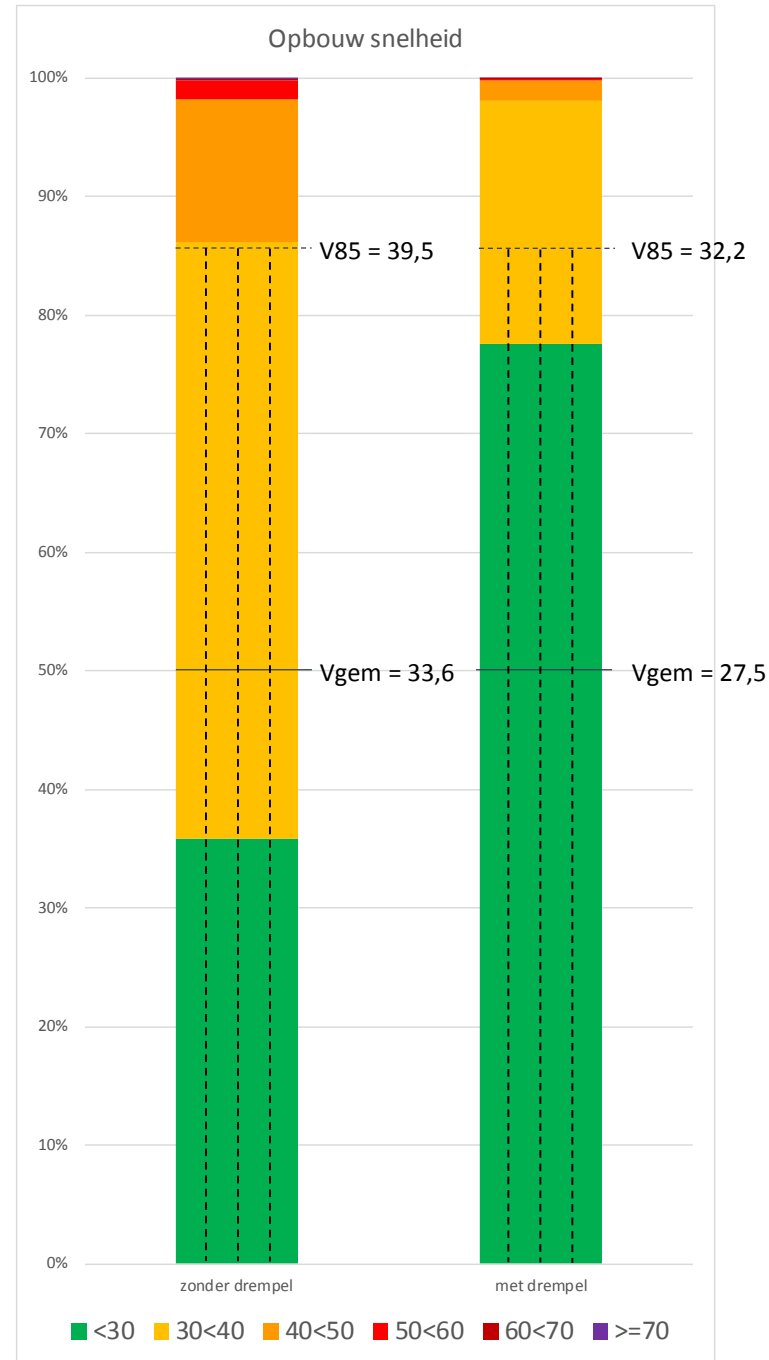
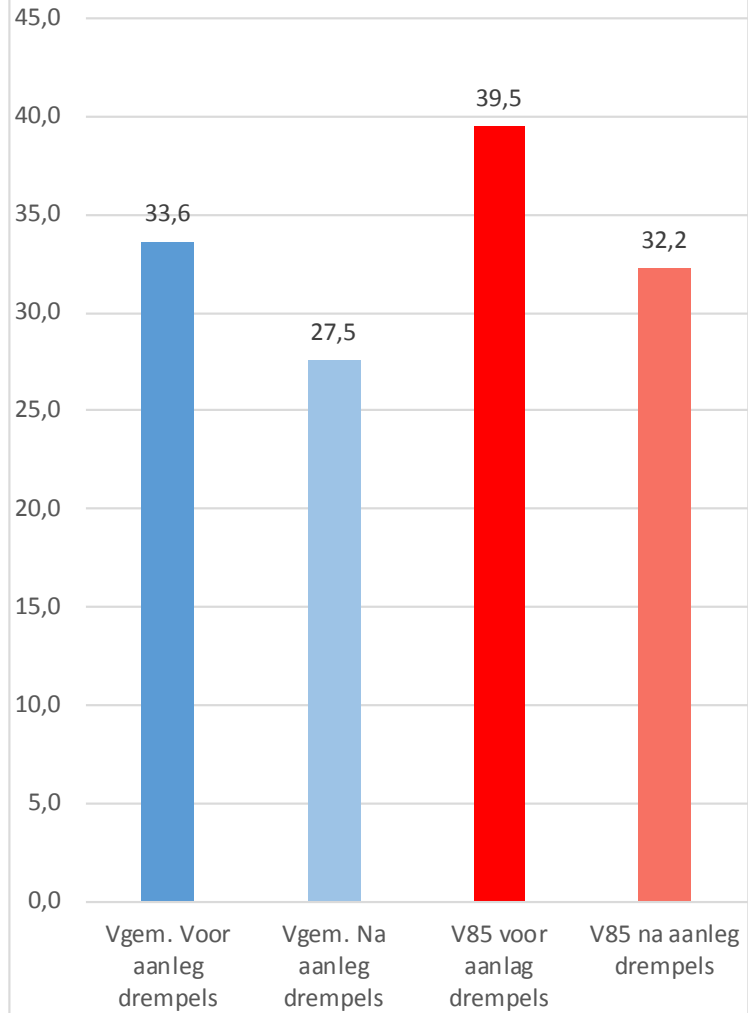
Dagverloop verschillen Vgem. en V85 thv Singel 315 (thv drempel)



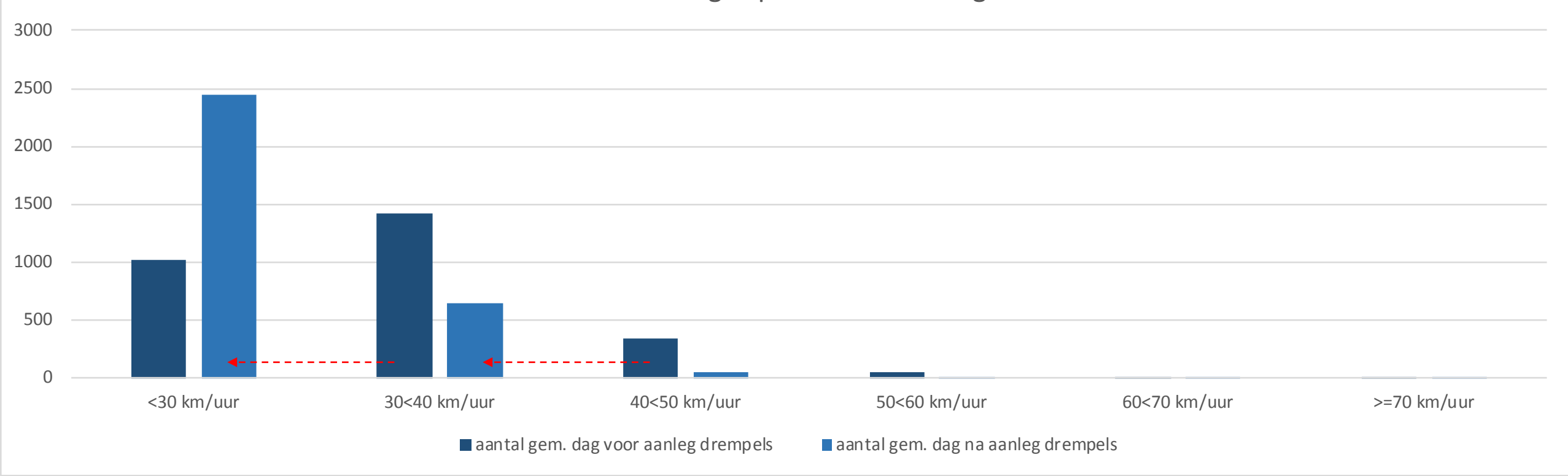
Verskil Vgem. en V85 thv Singel 315 (thv drempel)



Vershil Vgem. en V85 thv Singel 315 (thv drempel)



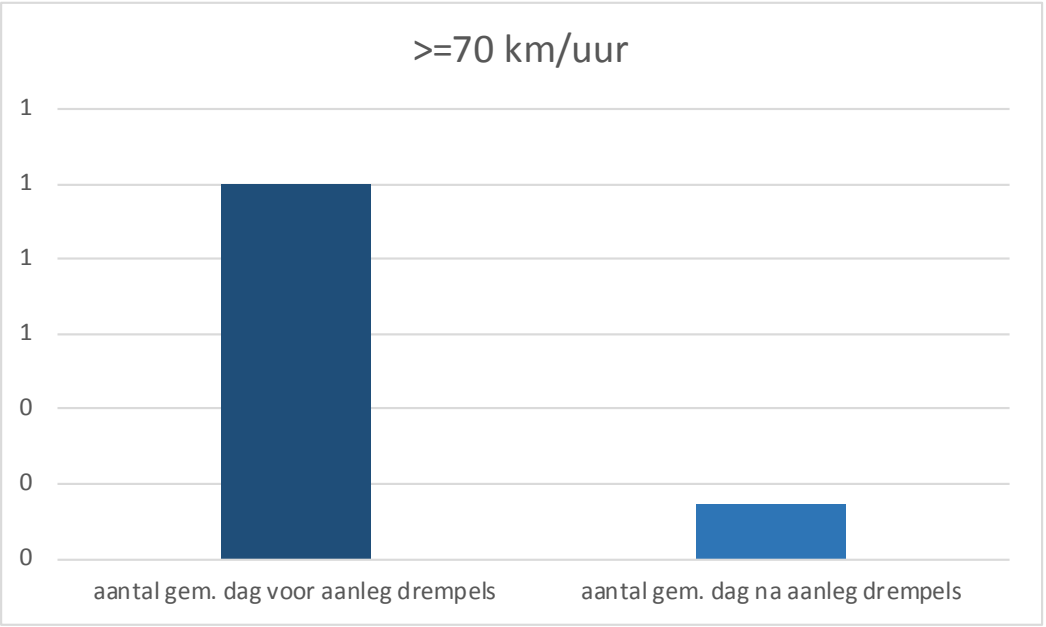
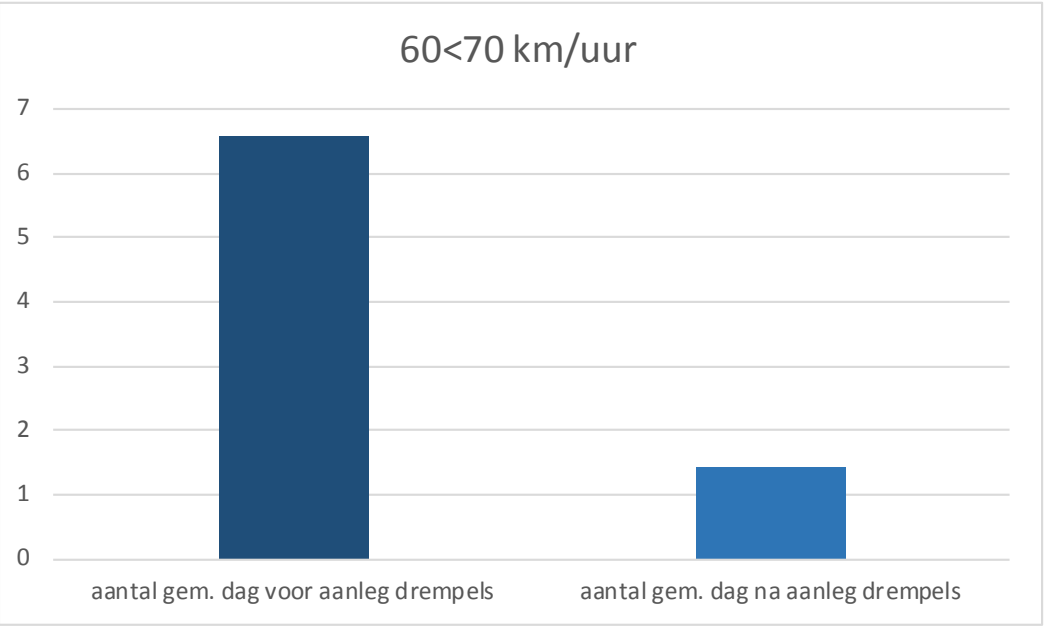
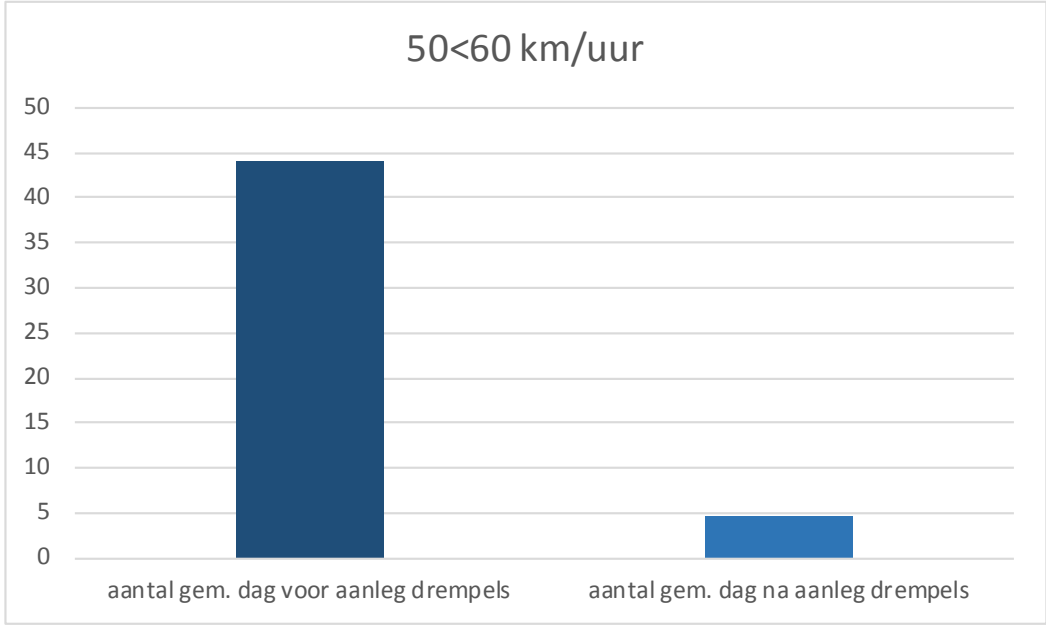
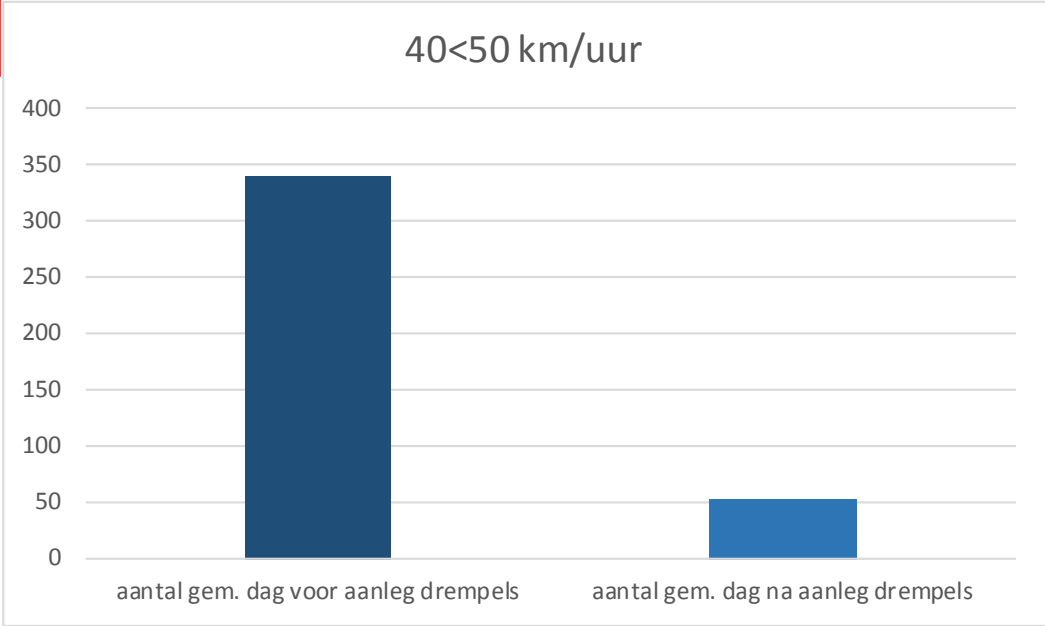
Aantal voertuigen per snelheidscategorie

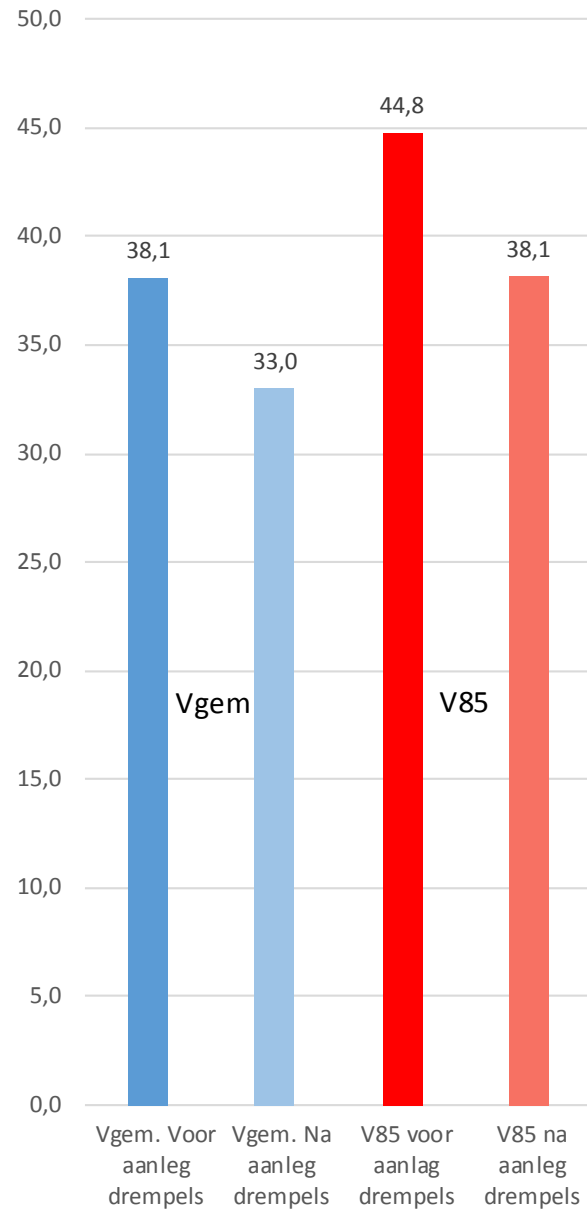


Gemiddeld aantal voertuigen weekdag: 2833

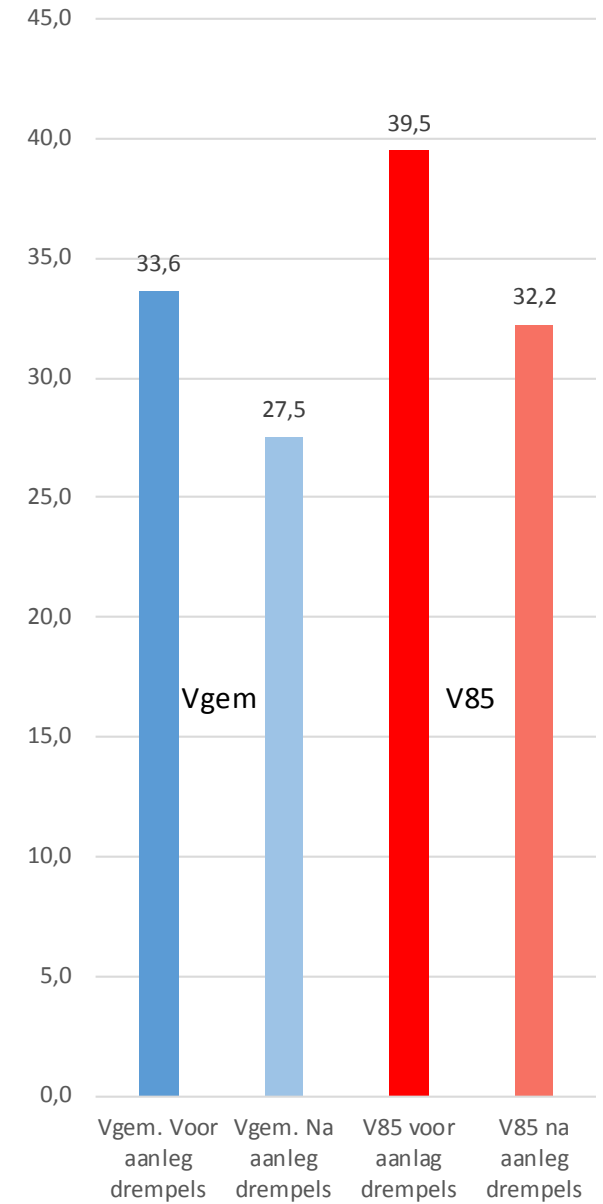
Gemiddeld aantal voertuigen weekdag: 3146

Locatie 2





Singel 300

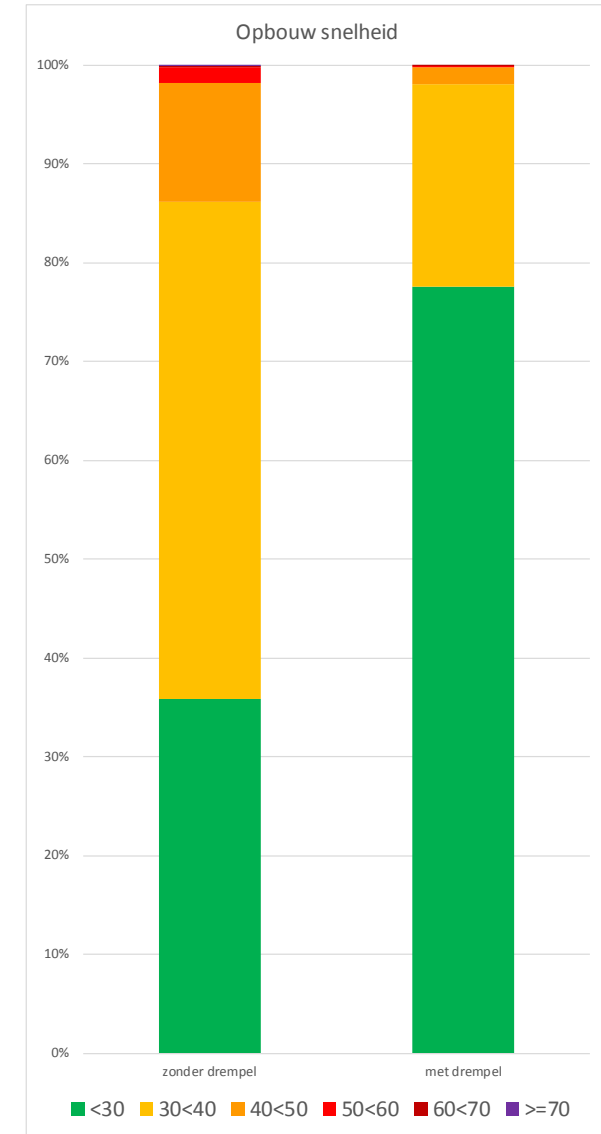
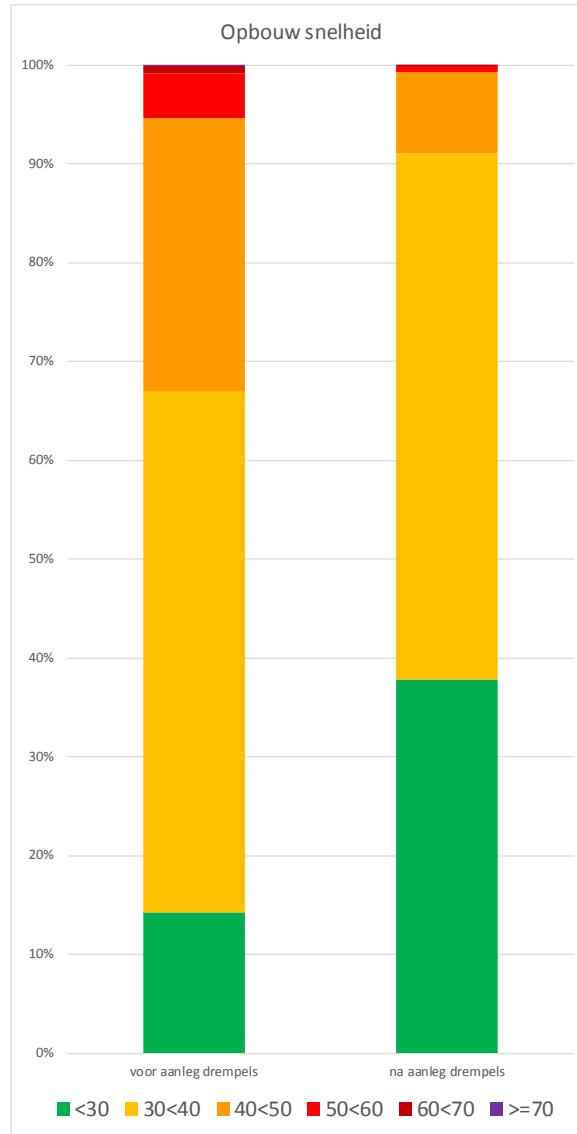


Singel 315

- Meer voertuigen 30 km/uur of langzamer
- Minder extreme overschrijdingen
- Gemiddelde snelheid daalt
- V85 daalt

| | Vgem | V85 |
|------|------|------|
| 2012 | 27 | 45 |
| 2017 | 34,3 | 41,4 |
| 2018 | 33,6 | 39,5 |
| 2018 | 27,5 | 32,2 |

Thv Singel 323 / 315



Singel 300

Singel 315