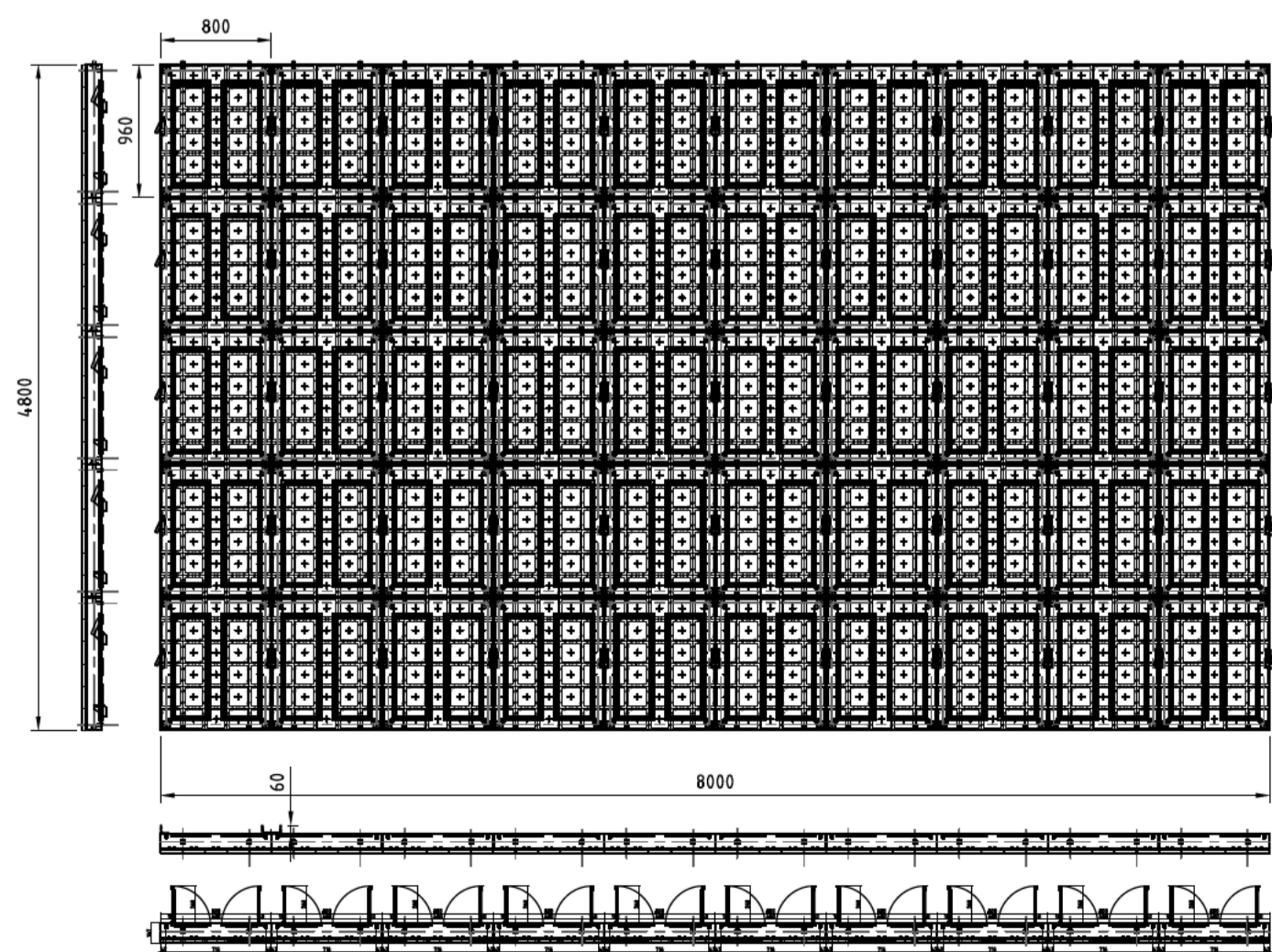
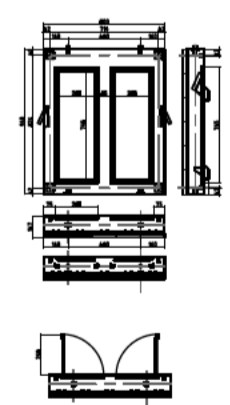
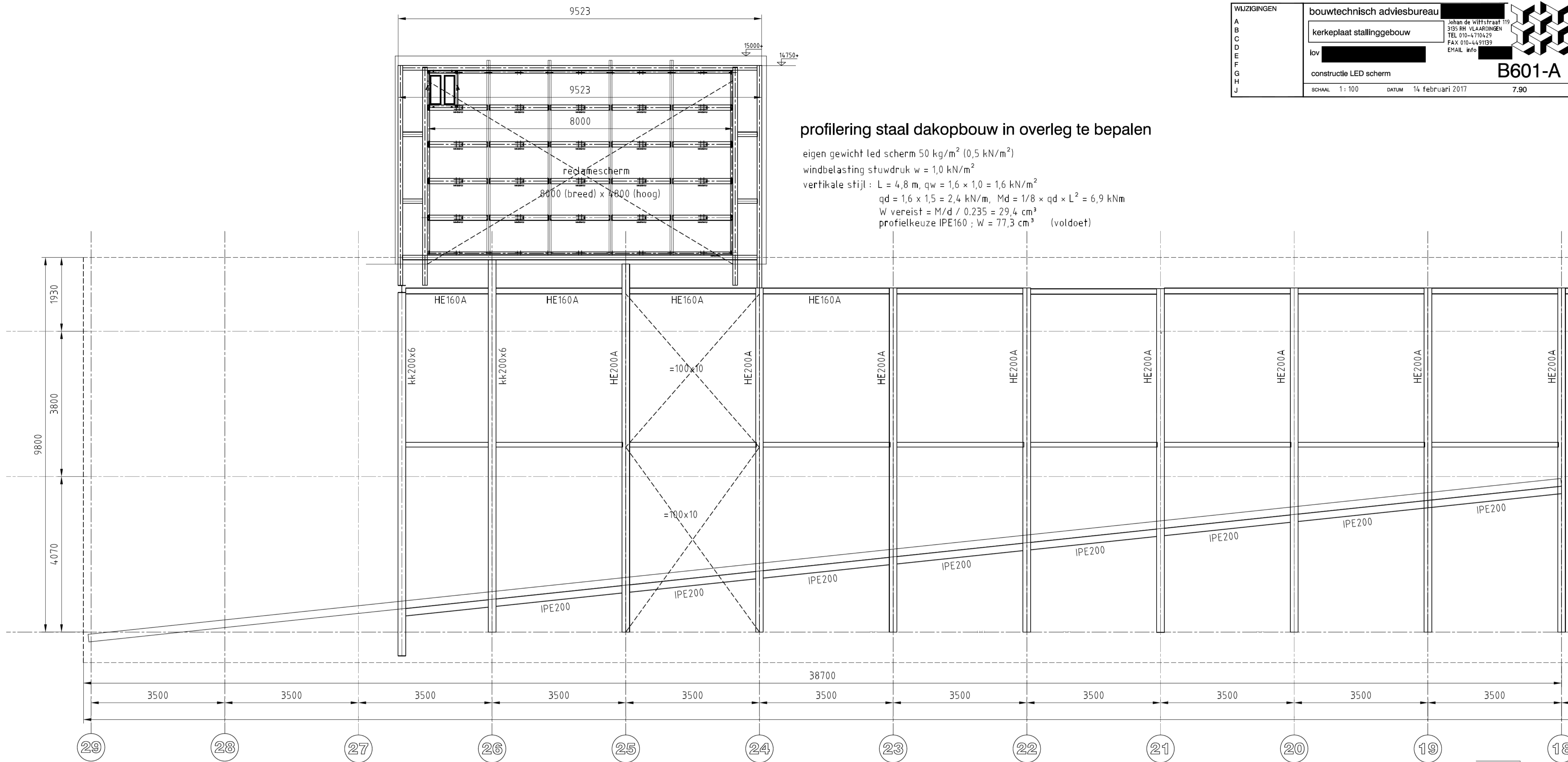
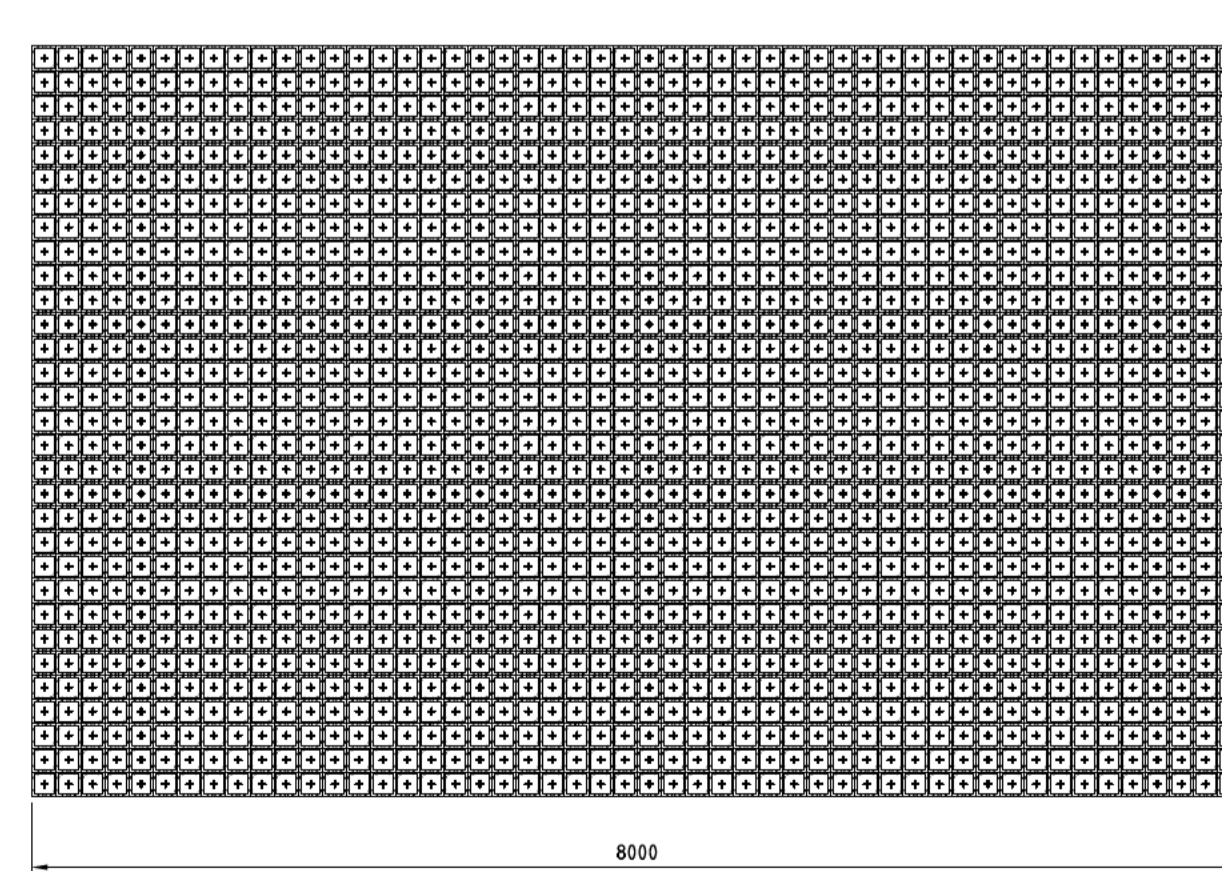


profilering staal dakopbouw in overleg te bepalen

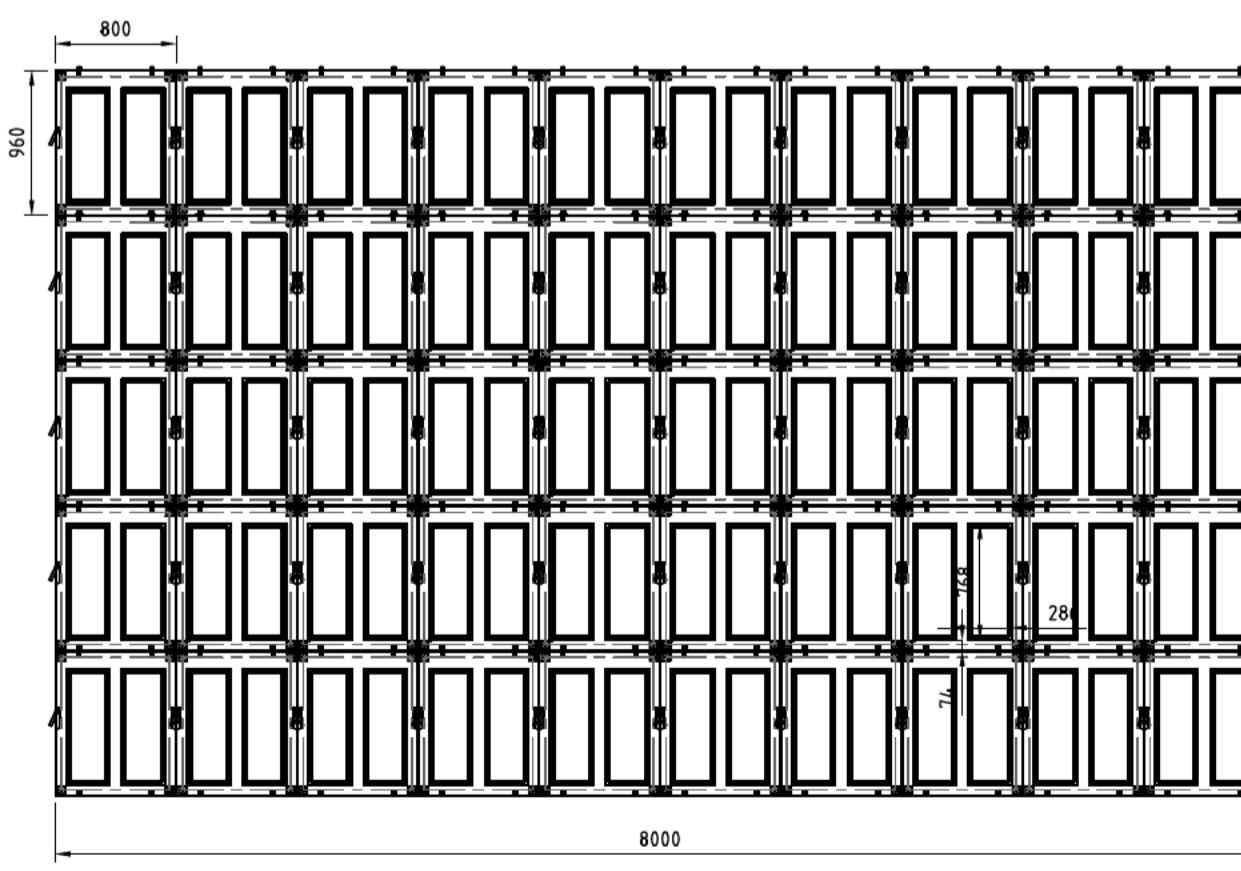
eigen gewicht led scherm 50 kg/m^2 ($0,5 \text{ kN/m}^2$)
 windbelasting stuwdruk $w = 1,0 \text{ kN/m}^2$
 verticale stijl : $L = 4,8 \text{ m}$, $q_w = 1,6 \times 1,0 = 1,6 \text{ kN/m}^2$
 $q_d = 1,6 \times 1,5 = 2,4 \text{ kN/m}$, $M_d = 1/8 \times q_d \times L^2 = 6,9 \text{ kNm}$
 $W_{vereist} = M_d / 0,235 = 29,4 \text{ cm}^3$
 profielkeuze IPE160 ; $W = 77,3 \text{ cm}^3$ (voldoet)



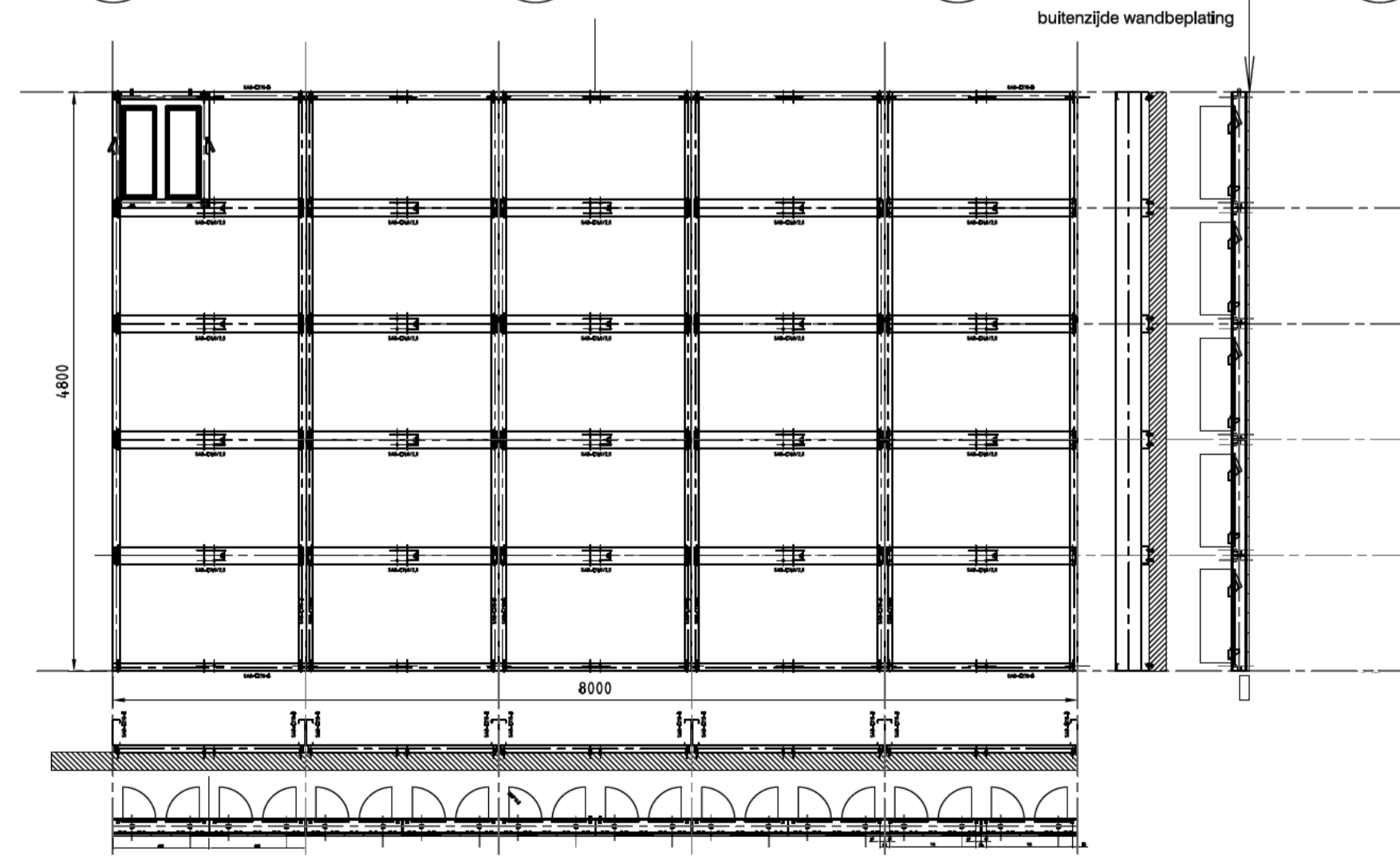
aanzicht scherm + 111



aanzicht schermoppervlak 112



aanzicht elementen 113



aanzicht montage frame 114